



GENERAL BLOCK

MAKKAAN.COM

PHASE 2

4 Years Payment Plan (COST OF LAND)

Size	Total Price	Down Payment	40 Monthly Installments	08 Half Yearly Installments
125 Sq. Yd. (5 Marla Res.)	1,490,000	149,000	14,900	93,125
250 Sq. Yd. (10 Marla Res.)	2,290,000	229,000	22,900	143,125
500 Sq. Yd. (1 Kanal Res.)	4,290,000	429,000	42,900	268,125
1000 Sq. Yd. (2 Kanal Res.)	8,300,000	830,000	83,000	518,750
125 Sq. Yd. (5 Marla Comm.)	9,000,000	900,000	90,000	562,500





Alhamdulillah - following the phenomenal success of General Block, Blue World City now presents General Block Phase - 2 as an epitome of excellence in urban-planning intricately combining residential, commercial and even industrial zones integrated into a lifestyle community right on the CPEC Route, featuring next-level amenities ushering in a new phase of 'Lifestyle for All'.

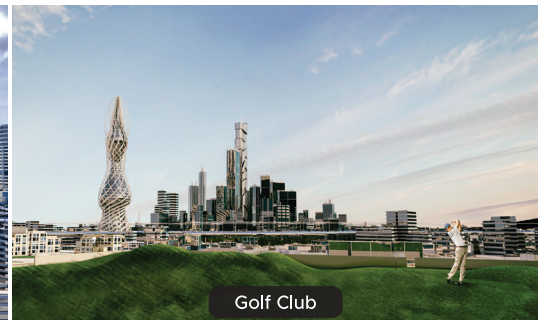
GENERAL BLOCK PHASE - 2



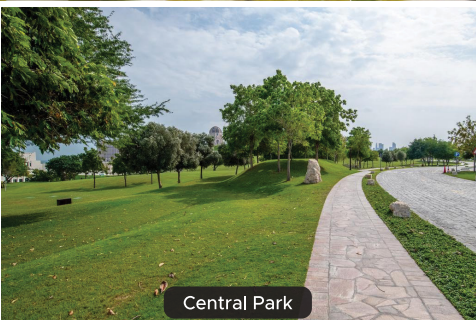
Central Mosque



Commercial



Golf Club



Central Park



Country Club



Industrial Zone

